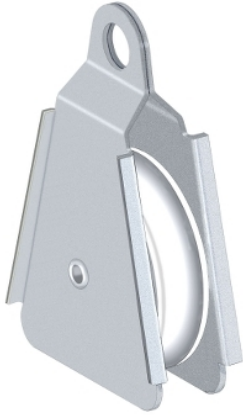


XY2CZ718

Telemecanique Emergency stop rope pull switches XY2C, XY2CED set of 10 pulleys XY2CZ708



Main

Range of product	Telemecanique Emergency stop rope pull switches XY2C
Accessory / separate part designation	Pulley
Accessory / separate part type	Cable support
Accessory / separate part categor	Separate parts
Accessory / separate part destination	Emergency stop rope pull switch type XY2C

Complementary

Product compatibility	XY2C.
Quantity per set	Set of 10
Net weight	0.55 kg

Packing Units

Unit Type of Package 1	PCE
Number of Units in Package 1	1
Package 1 Height	1.8 cm
Package 1 Width	2.0 cm
Package 1 Length	5.2 cm
Package 1 Weight	54.0 g
Unit Type of Package 2	BAG
Number of Units in Package 2	10
Package 2 Height	3.6 cm
Package 2 Width	20.0 cm
Package 2 Length	23.5 cm
Package 2 Weight	556.0 g
Unit Type of Package 3	S01
Number of Units in Package 3	40
Package 3 Height	15.0 cm
Package 3 Width	15.0 cm
Package 3 Length	40.0 cm
Package 3 Weight	2.404 kg

Offer Sustainability

Sustainable offer status	Green Premium product
Circularity Profile	No need of specific recycling operations
California proposition 65	WARNING: This product can expose you to chemicals including: Diisononyl phthalate (DINP), which is known to the State of California to cause cancer, and Di-isodecyl phthalate (DIDP), which is known to the State of California to cause birth defects or other reproductive harm. For more information go to www.P65Warnings.ca.gov
For all Reach Rohs enquiries contact us at	sustainability@tesensors.com