



Main

Range of product	Telemecanique Photoelectric sensors XU
Series name	Application food and beverage single mode
Electronic sensor type	Photo-electric sensor
Sensor name	XUK
Sensor design	Compact 50 x 50
Detection system	Diffuse with background suppression
Material	Stainless steel
Type of output signal	Discrete
Supply circuit type	DC
Wiring technique	4-wire
Discrete output type	PNP
Discrete output function	1 NO
Electrical connection	1 male connector M12, 4 pins
Product specific application	-
Emission	Red diffuse with background suppression
[Sn] nominal sensing distance	0.55 m diffuse with background suppression

Complementary

Enclosure material	Stainless steel 316
Lens material	PMMA
Maximum sensing distance	0.55 m diffuse with background suppression
Output type	Solid state Analog
Add on output	Without
Add on input	External teach
Status LED	1 LED (yellow) for output state 1 LED (green/yellow) for supply on/output state
[Us] rated supply voltage	24 V DC with reverse polarity protection
Supply voltage limits	18...30 V DC
Switching capacity in mA	<= 100 mA (overload and short-circuit protection)
Switching frequency	<= 250 Hz
Maximum voltage drop	<2 V
Current consumption	<= 60 mA no-load
Maximum delay first up	5000 ms
Maximum delay response	2 ms
Maximum delay recovery	2 ms
Setting-up	Using teach button or remote teaching
Depth	50 mm
Height	50 mm
Width	18 mm
Net weight	0.035 kg

Environment

Product certifications	Ecolab[RETURN]CE
Ambient air temperature for operation	-40...60 °C discrete output -40...50 °C analog output
Temperature for cleaning operation	-20...100 °C
Ambient air temperature for storage	-40...80 °C
Vibration resistance	7 gn, amplitude = +/- 1.5 mm (f = 10...55 Hz) conforming to IEC 60068-2-6
Shock resistance	30 gn (duration = 11 ms) conforming to IEC 60068-2-27
IP degree of protection	IP67 conforming to IEC 60529 IP69K conforming to DIN 40050

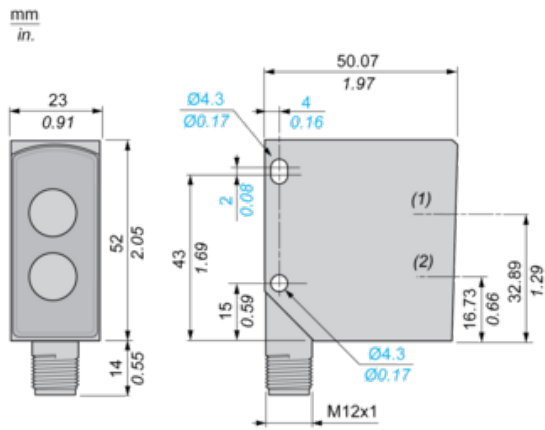
Packing Units

Unit Type of Package 1	PCE
Number of Units in Package 1	1

Contractual warranty

Warranty	18 months
----------	-----------

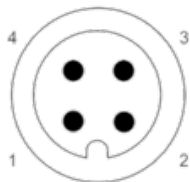
Dimensions



- (1) Receiver optical axis
- (2) Transmitter optical axis

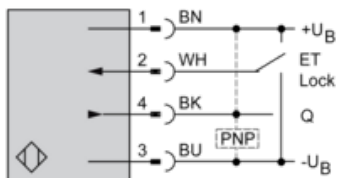
Wiring Schemes

M12 Connector



- 1 : (+)
- 2 : ET/Lock. ET: External Teach, Lock: pushbutton locking.
- 3 : (-)
- 4 : Output

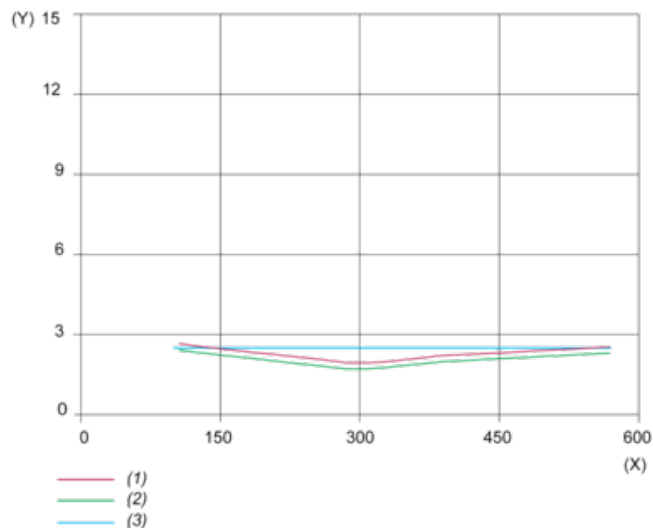
PNP Receiver



- BN : Brown
- WH : White
- BU : Blue
- BK : Black

Detection Curves

Scanning Properties



(y) Distance (%)

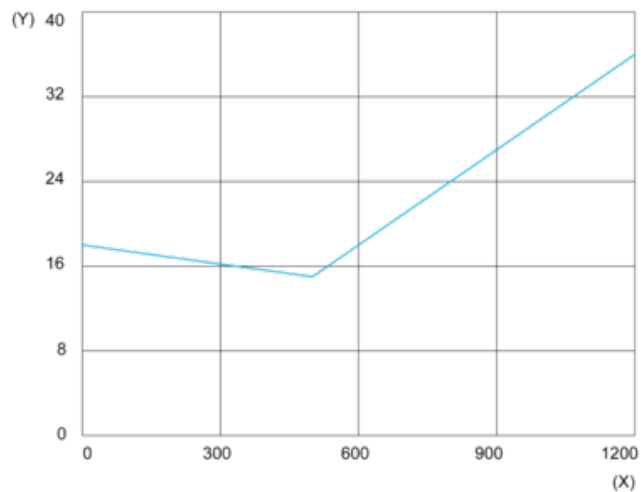
(x) Detection distance (mm)

(1) Black/white 6%/90%

(2) Grey/white 18%/90%

(3) White/white 90%/90%

Size of Luminous Point



(y) Size (mm)

(x) Distance (mm)