

XUK2LAPSMM12R

Photoelectric sensors XU, photo electric laser sensor, XUK, thru beam receiver, Sn 30 m, 10...30 VDC, M12



Main

| | |
|-------------------------------|---|
| Range of product | Telemecanique Photoelectric sensors XU |
| Series name | Application material handling Application assembly |
| Electronic sensor type | Photo-electric sensor |
| Sensor name | XUK |
| Sensor design | Compact 50 x 50 |
| Detection system | Thru beam |
| Material | Plastic |
| Type of output signal | Discrete |
| Supply circuit type | DC |
| Wiring technique | 4-wire |
| Discrete output type | PNP |
| Discrete output function | 1 NO or 1 NC programmable |
| Electrical connection | 1 male connector M12, 4 pins |
| Product specific application | - |
| Emission | Red thru beam |
| [Sn] nominal sensing distance | 25 m thru beam need transmitter XUK2LAKSMM12T |

Complementary

| | |
|---------------------------|--|
| Enclosure material | ABS/PC |
| Lens material | PMMA |
| Maximum sensing distance | 30 m thru beam |
| Output type | Solid state |
| Add on output | Without |
| Add on input | External teach |
| Status LED | 1 LED (green) for supply on 1 LED (yellow) for output state 1 LED (red) for alignment assistance |
| [Us] rated supply voltage | 12...24 V DC with reverse polarity protection |
| Supply voltage limits | 10...30 V DC |
| Switching capacity in mA | <= 100 mA (overload and short-circuit protection) |
| Switching frequency | <= 500 Hz |
| Maximum voltage drop | <2.4 V (closed state) |
| Current consumption | <= 30 mA no-load |
| Maximum delay first up | 300 ms |
| Maximum delay response | 0.14 ms |
| Maximum delay recovery | 0.14 ms |
| Setting-up | Using teach button or remote teaching |
| Depth | 50 mm |
| Height | 50 mm |
| Width | 23 mm |
| Net weight | 0.035 kg |

Environment

| | |
|---------------------------------------|---|
| Product certifications | Ecolab[RETURN]cULus[RETURN]CE |
| Ambient air temperature for operation | -20...60 °C -20...50 °C, UL certified |
| Ambient air temperature for storage | -20...80 °C |
| Vibration resistance | 7 gn, amplitude = +/- 1.5 mm (f = 10...55 Hz) conforming to IEC 60068-2-6 |
| Shock resistance | 30 gn (duration = 11 ms) conforming to IEC 60947-5-2 |
| IP degree of protection | IP67 conforming to IEC 60529 IP69K conforming to DIN 40050 |

Packing Units

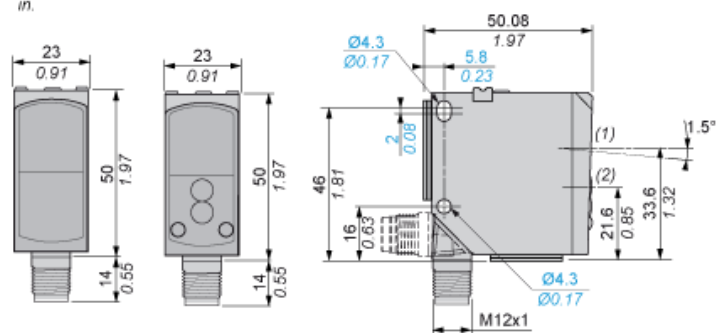
| | |
|------------------------------|----------|
| Unit Type of Package 1 | PCE |
| Number of Units in Package 1 | 1 |
| Package 1 Height | 3.0 cm |
| Package 1 Width | 6.0 cm |
| Package 1 Length | 10.0 cm |
| Package 1 Weight | 32.0 g |
| Unit Type of Package 2 | S01 |
| Number of Units in Package 2 | 28 |
| Package 2 Height | 15.0 cm |
| Package 2 Width | 15.0 cm |
| Package 2 Length | 40.0 cm |
| Package 2 Weight | 1.544 kg |

Offer Sustainability

| | |
|--|---|
| California proposition 65 | WARNING: This product can expose you to chemicals including: Diisononyl phthalate (DINP), which is known to the State of California to cause cancer, and Di-isodecyl phthalate (DIDP), which is known to the State of California to cause birth defects or other reproductive harm. For more information go to www.P65Warnings.ca.gov |
| For all Reach Rohs enquiries contact us at | sustainability@tesensors.com |

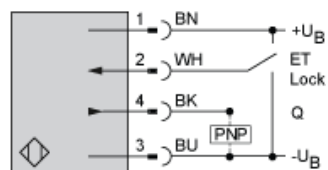
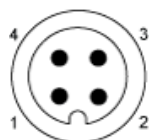
Contractual warranty

| | |
|----------|-----------|
| Warranty | 18 months |
|----------|-----------|

$$\frac{\text{mm}}{\text{in.}}$$


- (1) Receiver optical axis
- (2) Transmitter optical axis

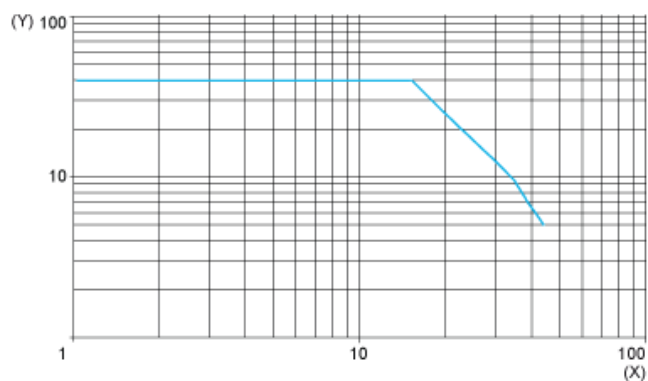
Wiring Schemes Using M12 Connector



- 1 : (+)
- 2 : ET/Lock (1)
- 3 : (-)
- 4 : Output
- BN : Brown
- WH : White
- BU : Blue
- BK : Black
- +UB : External teach
- UB : Pushbutton locking
- (1) ET/Lock. ET: External Teach, Lock: Pushbutton locking

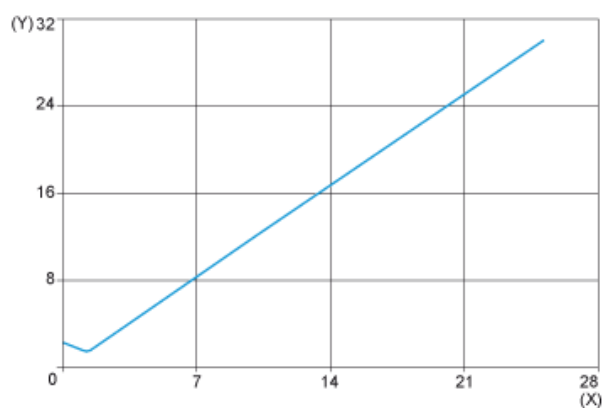
Curves

Excess Gain Curve



(X) Distance (m)
(Y) Gain

Size of Luminous Point



(X) Distance (m)
(Y) Size (mm)