

XS9F111A2L01M8

inductive sensor XS9 15x32x8 - PBT - Sn5mm
- 24VDC - M8 0.15m



Main

| | |
|------------------------------------|--|
| Range of product | Telemecanique Inductive proximity sensors XS |
| Series name | Application |
| Sensor type | Inductive proximity sensor |
| Device application | - |
| Sensor name | XS9 |
| Sensor design | Flat form 15 x 32 x 8 |
| Size | 8 mm |
| Body type | Fixed |
| Detector flush mounting acceptance | Flush mountable |
| Material | Plastic |
| Enclosure material | PBT |
| Type of output signal | Analogue |
| Wiring technique | 2-wire |
| [Sn] nominal sensing distance | 5 mm |
| Output circuit type | DC |
| Analogue output range | 4...20 mA |
| Electrical connection | Remote male connector M8, 3 pins |
| Cable length | 0.15 m |
| [Us] rated supply voltage | 24 V DC |
| IP degree of protection | IP67 conforming to IEC 60529 |

Complementary

| | |
|------------------------------|------------------|
| Detection face | Frontal |
| Front material | PBT |
| Operating zone | 1...5 mm |
| Repeat accuracy | <= 3% of Sr |
| Linearity error | +/- 2 mA |
| Status LED | Without |
| Supply voltage limits | 15...36 V DC |
| Switching frequency | <= 2000 Hz |
| Current consumption | 0...4 mA no-load |
| Maximum output current drift | 10 % |
| Marking | CE |
| Depth | 8 mm |
| Height | 32 mm |
| Width | 15 mm |

Environment

| | |
|---------------------------------------|---|
| Product certifications | CSA[RETURN]UL |
| Ambient air temperature for operation | -25...70 °C |
| Ambient air temperature for storage | -40...85 °C |
| Vibration resistance | 25 gn amplitude = +/- 2 mm (f = 10...55 Hz) conforming to IEC 60068-2-6 |
| Shock resistance | 50 gn for 11 ms conforming to IEC 60068-2-27 |

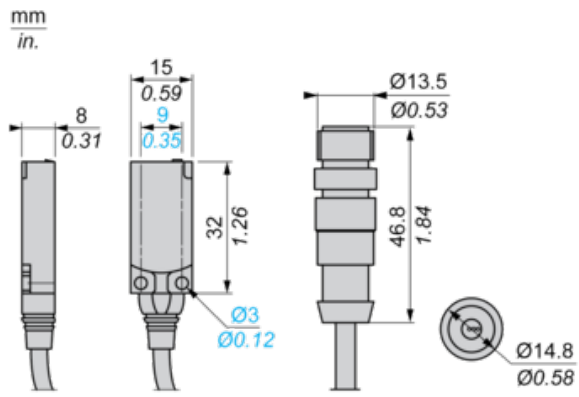
Packing Units

| | |
|------------------------------|-----|
| Unit Type of Package 1 | PCE |
| Number of Units in Package 1 | 1 |

Contractual warranty

| | |
|----------|-----------|
| Warranty | 18 months |
|----------|-----------|

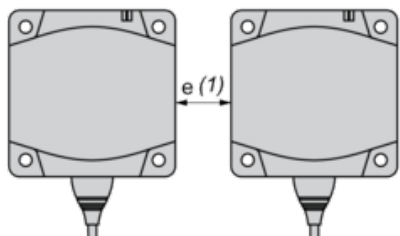
Dimensions



Setting-up

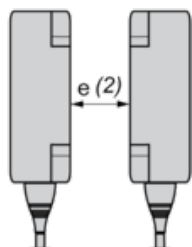
Minimum Mounting Distances (mm)

Side by Side



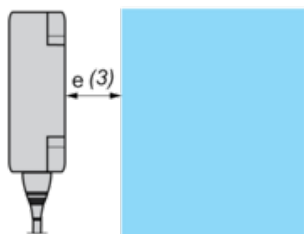
$$e(1) \geq 15$$

Face to Face



$$e(2) \geq 36$$

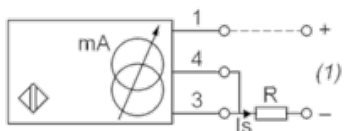
Facing a Metal Object



$$e(3) \geq 15$$

Wiring Schemes

2-Wire Connection

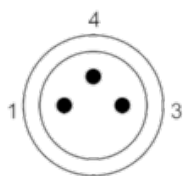


(1) Output current

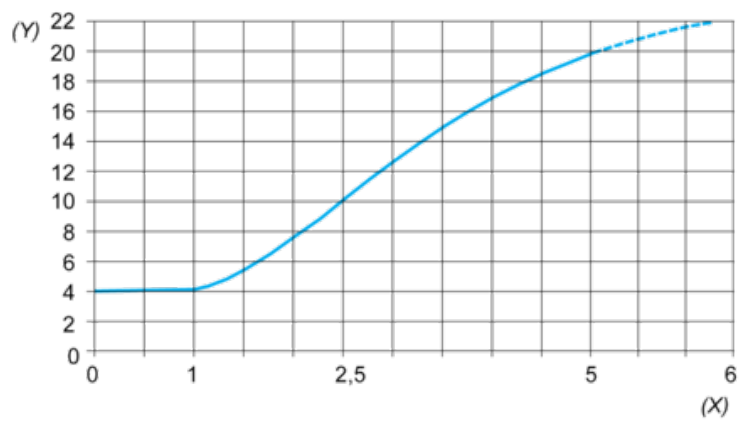
Ensure a minimum of 10 V between the + (terminal 1) and - (terminal 3) of the sensor

| | Output current | Load impedance value |
|------|----------------|----------------------|
| 12 V | 4...20 mA | $R \leq 8.2 \Omega$ |
| 24 V | 4...20 mA | $R \leq 470 \Omega$ |

M8



Output Curves



(Y) Is (mA)

(X) Sensors - object distance (mm)