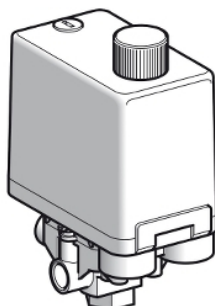


XMPB25B2131

Pressure sensors XM, pressure sensor XMP, 25 bar, G 1/4 female, 2 NC, RESET knob control



Main

| | |
|-----------------------------------|---|
| Range of product | Telemecanique Pressure sensors XM |
| Pressure sensor type | Electromechanical pressure sensor |
| Pressure sensor name | XMP |
| Pressure rating | 25 bar |
| Fluid connection type | G 1/4 (female) conforming to ISO 228 |
| Controlled fluid | Air (0...70 °C) Fresh water (0...70 °C) Sea water (0...70 °C) |
| Cable entry | 2 entries tapped for Pg 13.5 cable gland conforming to NF C 68-300 |
| Contacts type and composition | 2 NC snap action |
| Product specific application | - |
| Pressure switch type of operation | Regulation between 2 thresholds |
| Electrical connection | Screw-clamp terminals, clamping capacity: minimum : 2 x 4 mm ² |
| Electrical circuit type | Power circuit |
| Scale type | Adjustable differential |
| Local display | Without |
| Sale per indivisible quantity | 1 |

Complementary

| | |
|---|--|
| Adjustable range of switching point on falling pressure | 0.1...20.5 bar |
| Adjustment range high setting | 3.5...25 bar |
| Possible differential minimum at low setting | 3.4 bar |
| Possible differential minimum at high setting | 4.5 bar |
| Possible differential maximum at high setting | 20 bar |
| Destruction pressure | 100 bar |
| Type of decompression valve | Without |
| Control type | RESET knob |
| Terminal block type | 4 terminals |
| Pressure actuator | Diaphragm |
| Materials in contact with fluid | Canvas covered nitrile Chromated zinc alloy |
| Enclosure material | PA impregnated with fibreglass |
| Operating position | Any position |
| Maximum operating rate | 10 cyc/mn |
| Repeat accuracy | 3.5 % |
| [Ui] rated insulation voltage | 500 V conforming to IEC 60947-1 |
| [Uimp] rated impulse withstand voltage | 6 kV conforming to IEC 60947-1 |
| Maximum resistance across terminals | 25 MOhm conforming to IEC 60255-7 category 3 25 MOhm conforming to NF C 93-050 method A |

| | |
|-------------------------------|---|
| Electrical durability | 1000000 Cycles 1.5 kW, operating rate <10 cyc/mn, load factor: 0.4, 400 V AC 3 phases 500000 Cycles 3 kW, operating rate <10 cyc/mn, load factor: 0.4, 400 V AC 3 phases 600000 Cycles 1.5 kW, operating rate <10 cyc/mn, load factor: 0.4, 230 V AC 3 phases 700000 cycles 2.2 kW, operating rate <10 cyc/mn, load factor: 0.4, 400 V AC 3 phases |
| Mechanical durability | 1000000 cycles |
| Setting | Nut |
| Net weight | 0.65 kg |
| Terminals description ISO n°1 | (3-4)NC (1-2)NC |
| Depth | 98 mm |
| Height | 145 mm |
| Width | 57 mm |

Environment

| | |
|---------------------------------------|--|
| Product certifications | EAC |
| Standards | IEC 60947-4-1 CE |
| Ambient air temperature for operation | -25...70 °C |
| Ambient air temperature for storage | -40...70 °C |
| Vibration resistance | 3 gn conforming to IEC 60068-2-6 (f = 10...500 Hz) |
| Shock resistance | 50 gn conforming to IEC 60068-2-27 |
| Electrical shock protection class | Class I conforming to IEC 60536 |
| IP degree of protection | IP54 conforming to IEC 60529 |

Packing Units

| | |
|------------------------------|---------|
| Unit Type of Package 1 | PCE |
| Number of Units in Package 1 | 1 |
| Package 1 Height | 6 cm |
| Package 1 Width | 11.5 cm |
| Package 1 Length | 17 cm |
| Package 1 Weight | 677 g |

Offer Sustainability

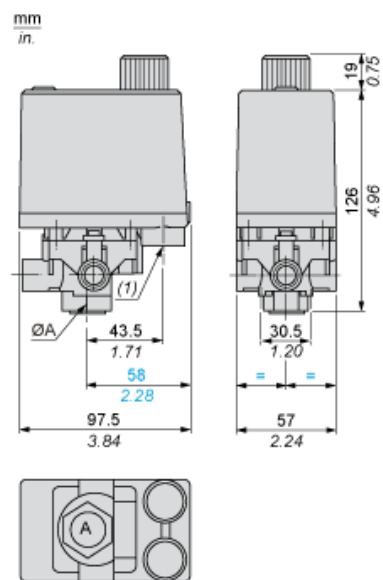
| | |
|--|---|
| Sustainable offer status | Green Premium product |
| California proposition 65 | WARNING: This product can expose you to chemicals including: Diisononyl phthalate (DINP), which is known to the State of California to cause cancer, and Di-isodecyl phthalate (DIDP), which is known to the State of California to cause birth defects or other reproductive harm. For more information go to www.P65Warnings.ca.gov |
| For all Reach Rohs enquiries contact us at | sustainability@tesensors.com |

Contractual warranty

| | |
|----------|-----------|
| Warranty | 18 months |
|----------|-----------|

Dimensions

Without Decompression Valve



Minimum Mounting Clearance

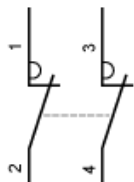


ØA = G1/4

(1) Minimum clearance zone for screwing-on pressure switch at point A

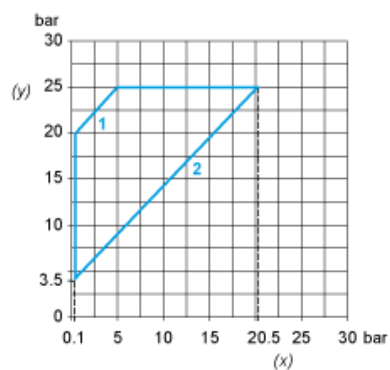
Wiring Diagram

Terminal Connections

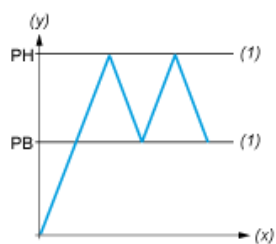


Curves

Operating Curves



- (y) Rising pressure
(x) Falling pressure
1 : Maximum differential
2 : Minimum differential



- (y) Pressure
(x) Time
(1) Adjustable value
PH : High point
PB : Below point