

Main

Range of product	Telemecanique Pressure sensors XM
Product or component type	Electronic pressure sensors
Pressure sensor type	Electronic pressure sensor
Pressure rating	60 bar
Pressure sensor name	XMLE
Controlled fluid	Air (-15...80 °C) Corrosive fluid (-15...80 °C) Hydraulic oil (-15...80 °C) Fresh water (0...80 °C)
Fluid connection type	G 1/4A (male) conforming to ISO 228
Type of output signal	Discrete
Discrete output type	Solid state NPN, 1 NC
Electrical connection	Male connector EN 175301-803-A (ex DIN43650)
Adjustable range of switching point on rising pressure	4.2...60 bar
Adjustable range of switching point on falling pressure	3...58.8 bar
[Us] rated supply voltage	24 V DC, voltage limits: 11...33 V
Diameter	40 mm

Complementary

Enclosure material	Anodised aluminium
Type of installation	Control circuit
Operating position	Any position
Materials in contact with fluid	Stainless steel type AISI 303
Pressure switch type of operation	Regulation between 2 thresholds
Possible differential minimum at low setting	1.2 bar
Possible differential maximum at high setting	1.2 bar
Maximum permissible accidental pressure	120 bar
Maximum permissible pressure - per cycle	60 bar
Destruction pressure	180 bar
Drift of the sensitivity	+/- 0.015 % of measuring range/°C
Drift of the zero point	+/- 0.03 % of measuring range/°C
Protection type	Overload protection Short-circuit Reverse polarity
Scale type	Adjustable differential
Local display	Without
Current consumption	< 15 mA
Mechanical durability	10000000 cycles
Response time on output	< 5 ms
Measurement accuracy	+/- 0.3 % of the measuring range
Net weight	0.27 kg

Environment

IP degree of protection	IP65
Vibration resistance	35 gn (f = 60...2000 Hz) 5 gn (f = 25...200 Hz)
Protective treatment	TC
Shock resistance	50 gn
Standards	EN 50082 EN 50081 CE
Product certifications	CSA[RETURN]UL
Ambient air temperature for operation	-15...80 °C

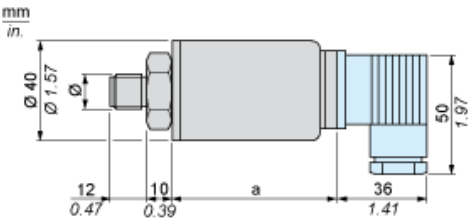
Packing Units

Unit Type of Package 1	PCE
Number of Units in Package 1	1

Contractual warranty

Warranty	18 months
----------	-----------

Dimensions



Ø : G 1/4 (male)

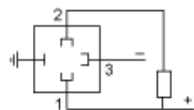
Dimensions in mm

a
75

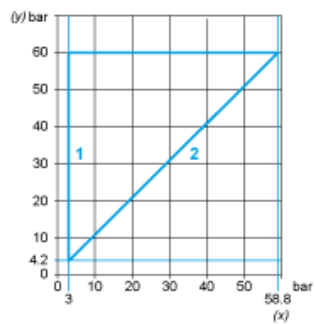
Dimensions in in.

a
2.95

Wiring Diagram



Operating Curves



- 1 : Maximum differential
- 2 : Minimum differential
- (y) Rising pressure
- (x) Falling pressure