

XIOT11SE0MRCL

Wireless transmitter, Dry contact LPWAN
Subscription not included



Main

[Us] rated supply voltage	3.6 V nominal
Battery type	Lithium integrated
Battery life	13.6 Year(S) 2 frames/day 4.2 Year(S) 10 frames/day 2.3 year(s) 20 frames/day
Number of inputs	4 dry contact
Electrical connection	Cable 2 m
Range of product	Telemecanique Cloud connected sensor XIOT
Product or component type	Wireless transmitter
Type of license	Registration required
Communication network type	Sigfox Europe
Transmission trigger	On change on one of the inputs 1 status frame per day
Max transmission frequency	6 frames/h 50 frames/day
Transmission rate	100 bit/s
Fixing mode	By screws
Height	100 mm
Length	45 mm
Width	50 mm
Net weight	0.216 kg
Radio frequency fields	868 MHz
Radio power	14 dBm
Operating distance	<= 10000 m

Complementary

Product destination	Pressure switch XMLA Pressure switch XMLB Pressure switch XMLC Pressure switch XMLD Limit switch XCM Limit switch XCKM Limit switch XCKL Limit switch XCKS Limit switch XCKJ Limit switch XCKN Limit switch XCKP Limit switch XCKT Limit switch XCKD
---------------------	--

Environment

Directives	1999/5/EC - R&TTE directive
Product certifications	CE[RETURN]Sigfox ready
Standards	IEC 62368-1 EN 301-489-1 ETSI EN 300 220-2
Ambient air temperature for operation	-25...70 °C
IP degree of protection	IP66

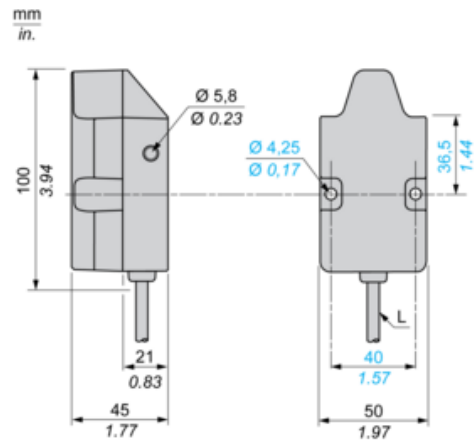
Packing Units

Unit Type of Package 1	PCE
Number of Units in Package 1	1
Package 1 Height	5.000 cm
Package 1 Width	12.800 cm
Package 1 Length	22.000 cm
Package 1 Weight	294.000 g
Unit Type of Package 2	S03
Number of Units in Package 2	18
Package 2 Height	30 cm
Package 2 Width	30 cm
Package 2 Length	40 cm
Package 2 Weight	5.821 kg

Offer Sustainability

WEEE	The product must be disposed on European Union markets following specific waste collection and never end up in rubbish bins
California proposition 65	WARNING: This product can expose you to chemicals including: Diisononyl phthalate (DINP), which is known to the State of California to cause cancer, and Di-isodecyl phthalate (DIDP), which is known to the State of California to cause birth defects or other reproductive harm. For more information go to www.P65Warnings.ca.gov
For all Reach Rohs enquiries contact us at	sustainability@tesensors.com

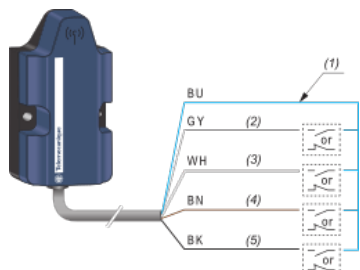
Dimensions



L = 2 m / 6.6 ft.

Connections

Wiring Diagram



(1) : Volt-free contacts (external signal)

(2) : Input 4

(3) : Input 3

(4) : Input 2

(5) : Input 1

BU : Blue

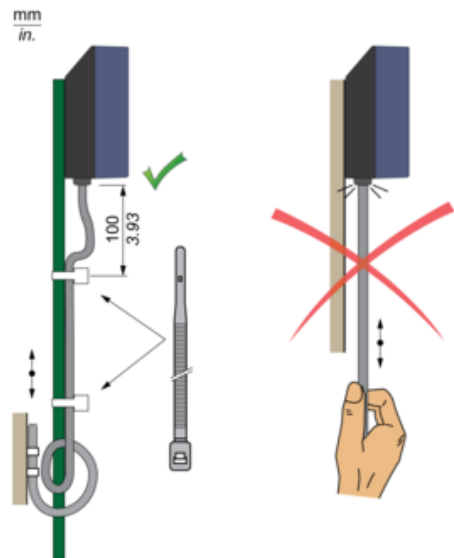
GY : Grey

WH : White

BN : Brown

BK : Black

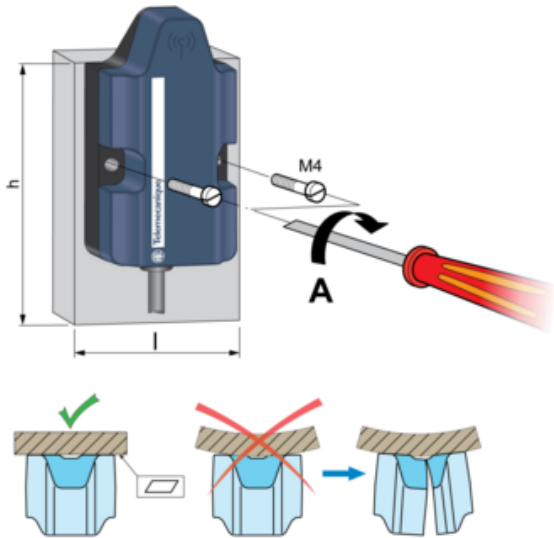
Wiring Precaution



The cable extension, beyond a 3 meters length, requires installation precautions, in case of electrical equipment presence, nearby. Move the cable away from equipment generating electromagnetic interference (transformer, power supply line, electric welding, etc.)

Mounting

Screw Mounting



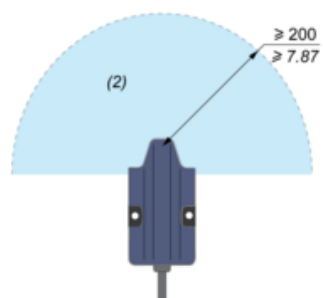
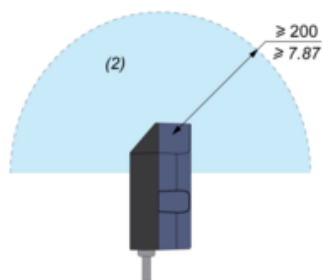
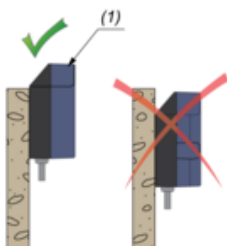
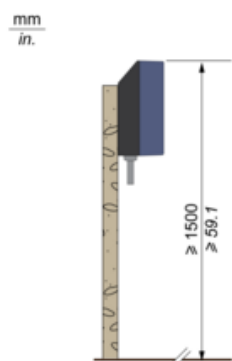
$l \text{ min} = 50 \text{ mm} / 1.97 \text{ in.}$

$h \text{ min} = 25 \text{ mm} / 0.98 \text{ in.}$

$A < 3 \text{ N.m} / 26.6 \text{ lb-in}$

Mounting

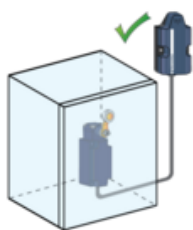
Mounting Precautions



- (1) : Antenna
(2) : Free area

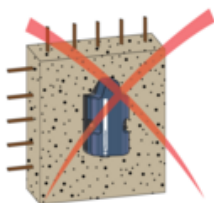
Mounting

Mounting in a Metal Cabinet



Mounting

Signal Attenuation According to the Material



Material	Signal attenuation (%)	Material attenuation (db)
Glass window	10...20% (1)	2
Plaster wall	20...30% (1)	3
Brick wall	50% (1)	6
Concrete wall	70...80% (1)	15
Metal structure	70...100% (1)	30
High voltage grid	50...90% (1)	20

(1) : Values for indication purposes only.

Actual values depend on the thickness and nature of the material.